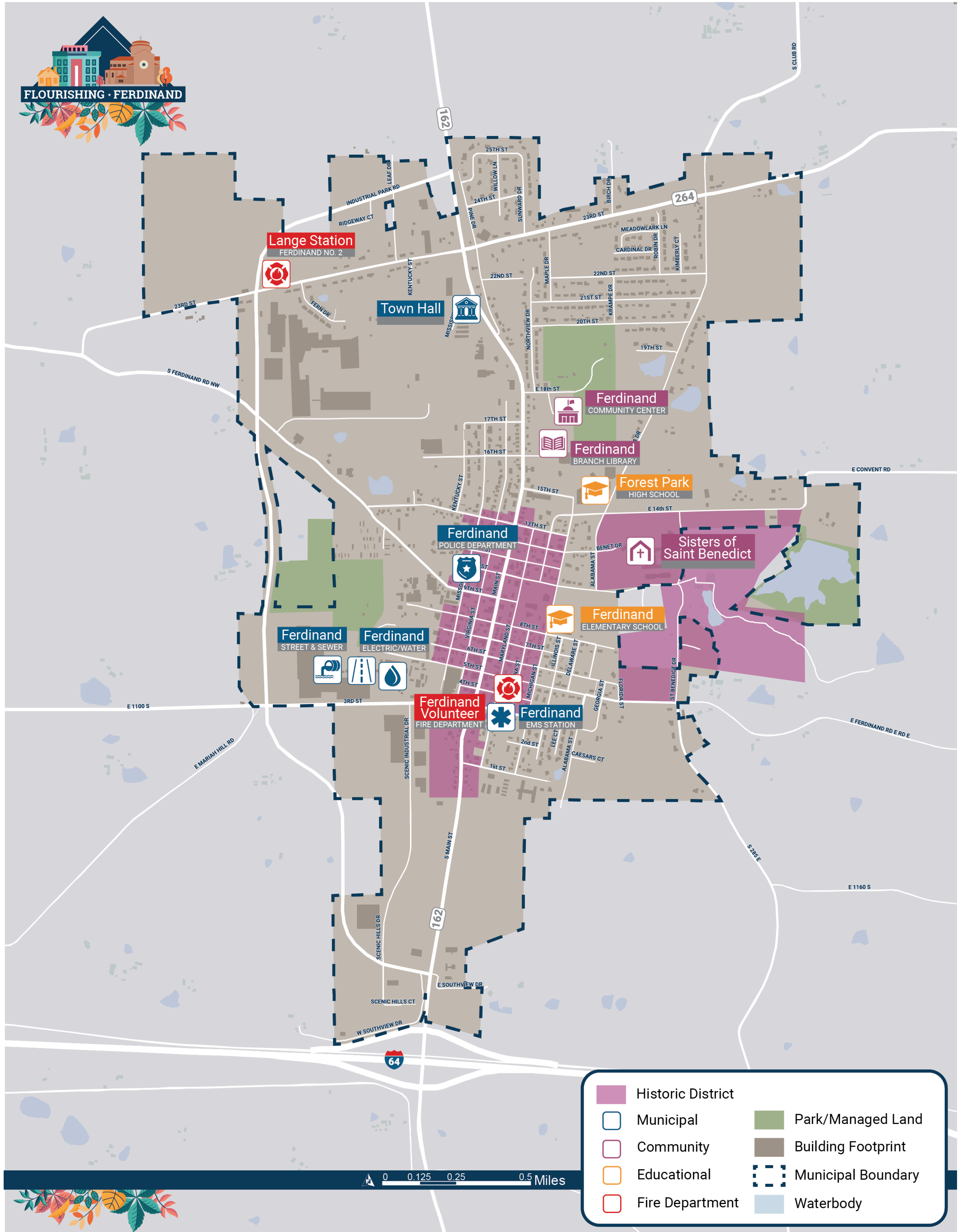
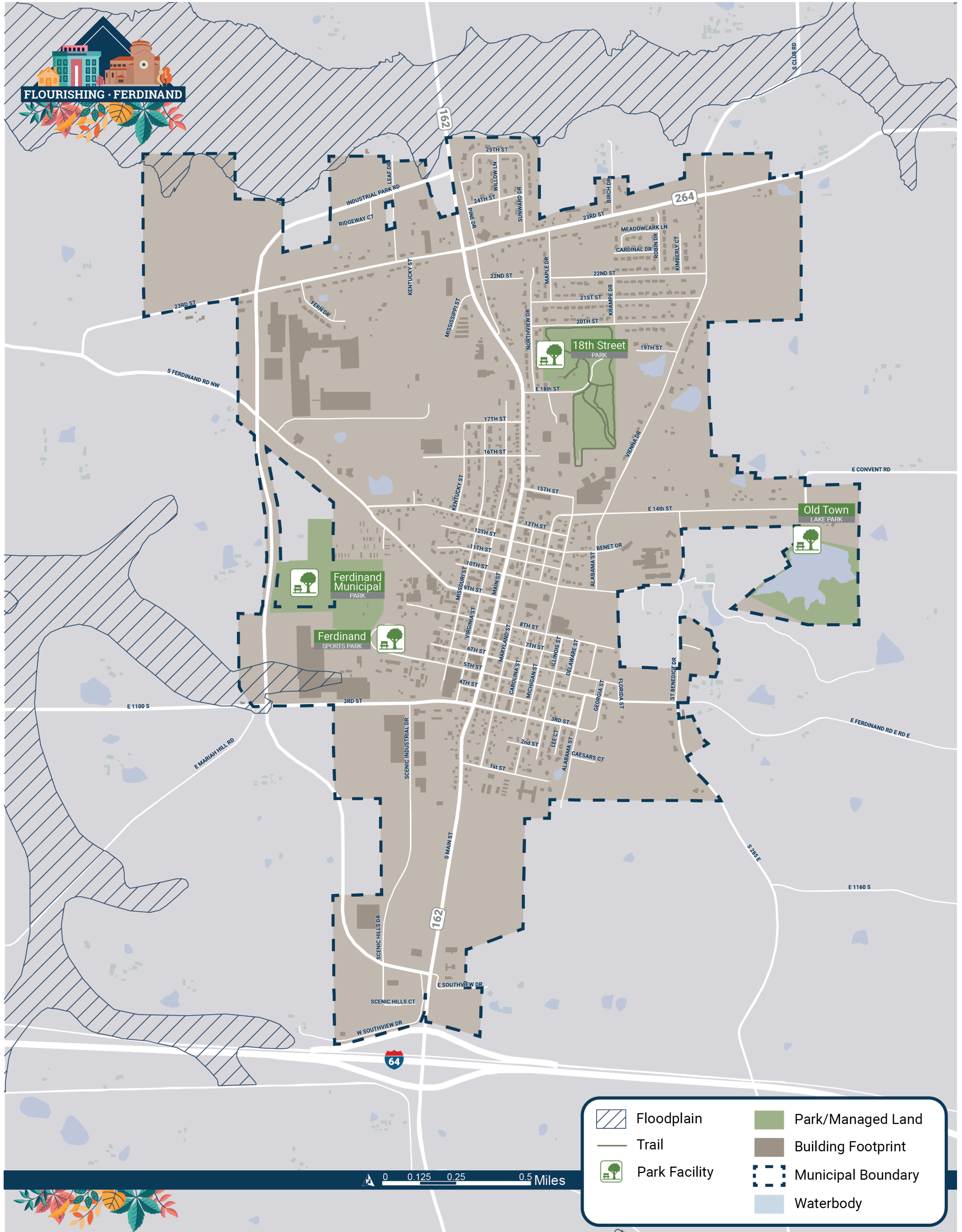


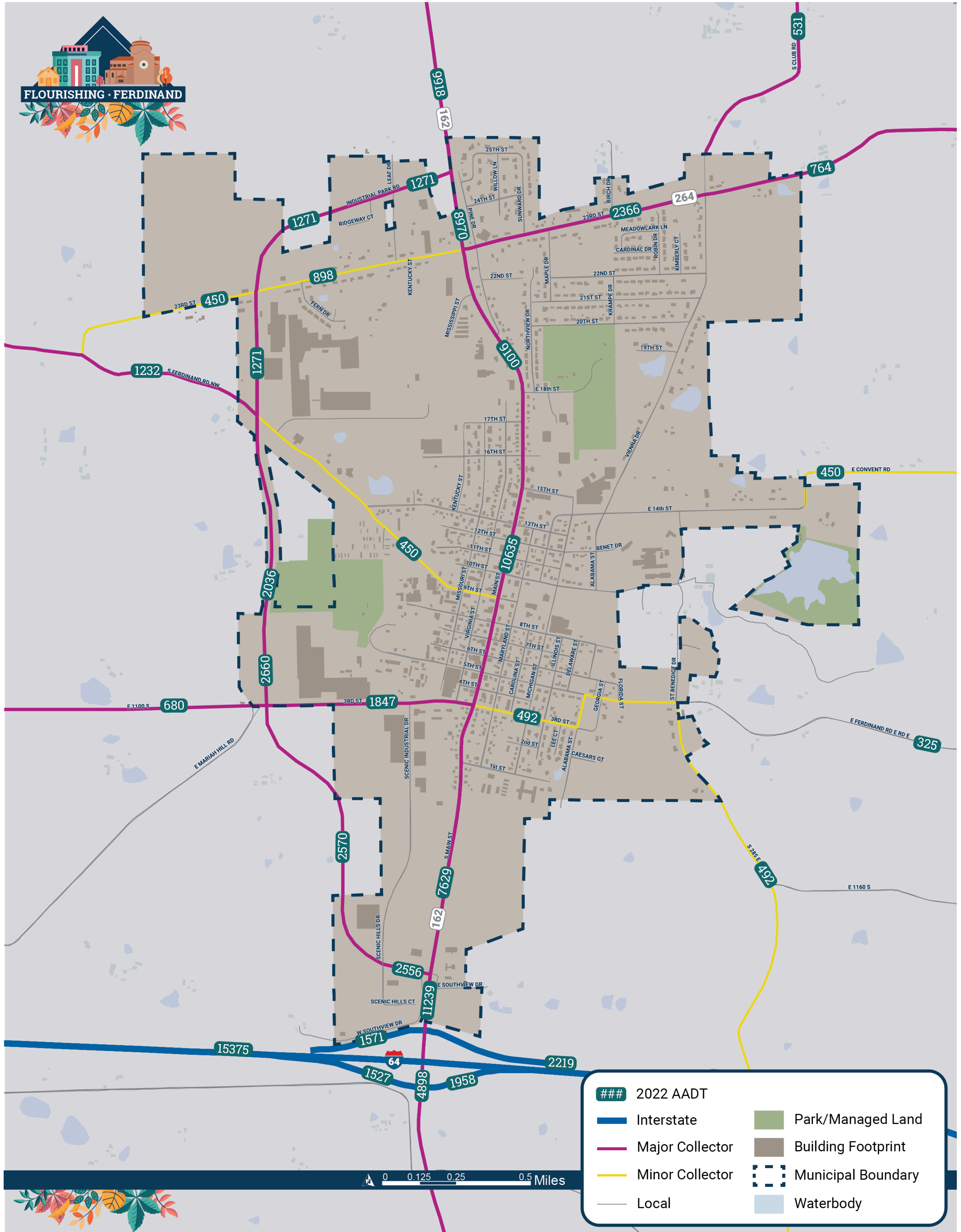
EXISTING FACILITIES MAP



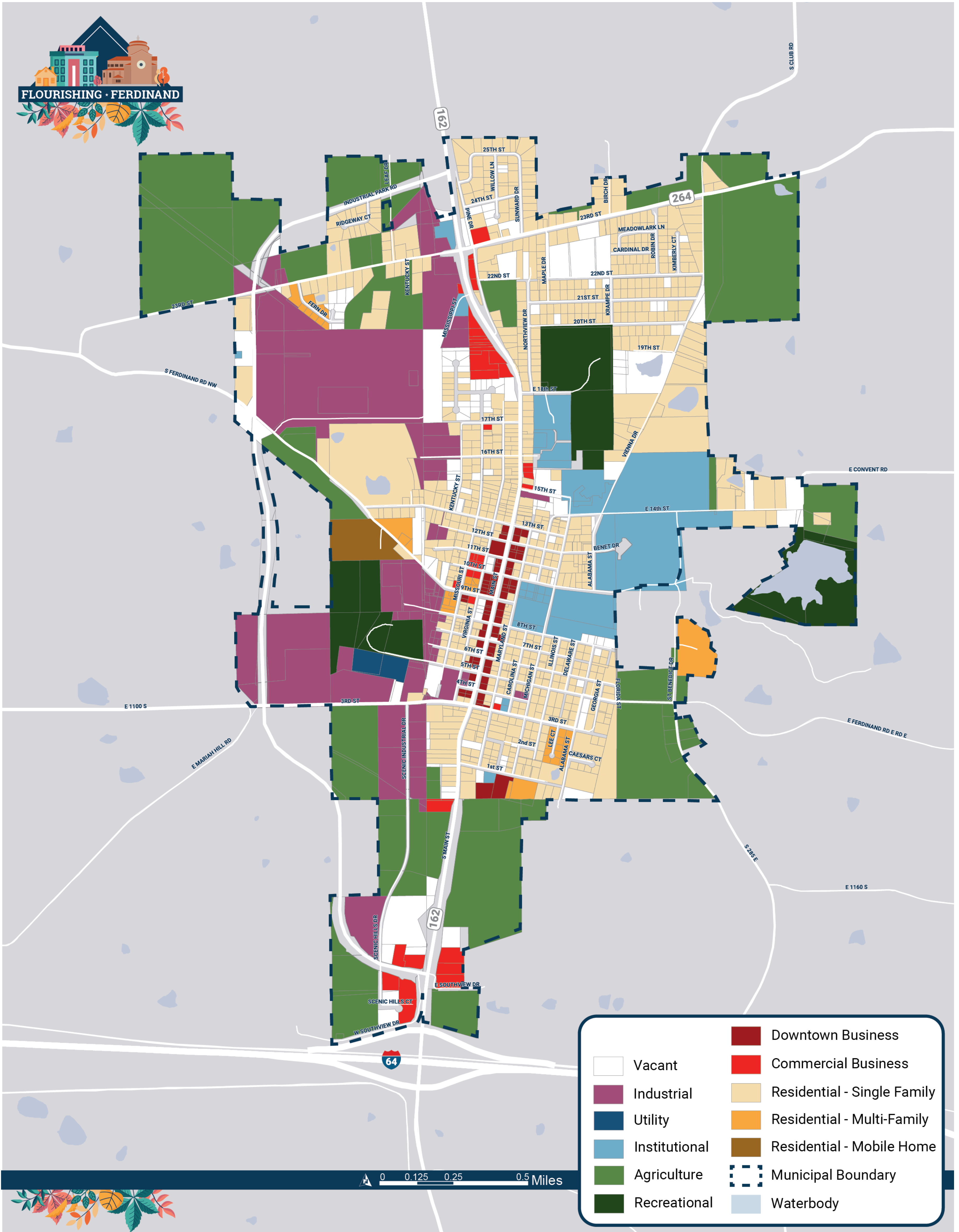
EXISTING RECREATION & ENVIRONMENTAL MAP



EXISTING TRANSPORTATION MAP



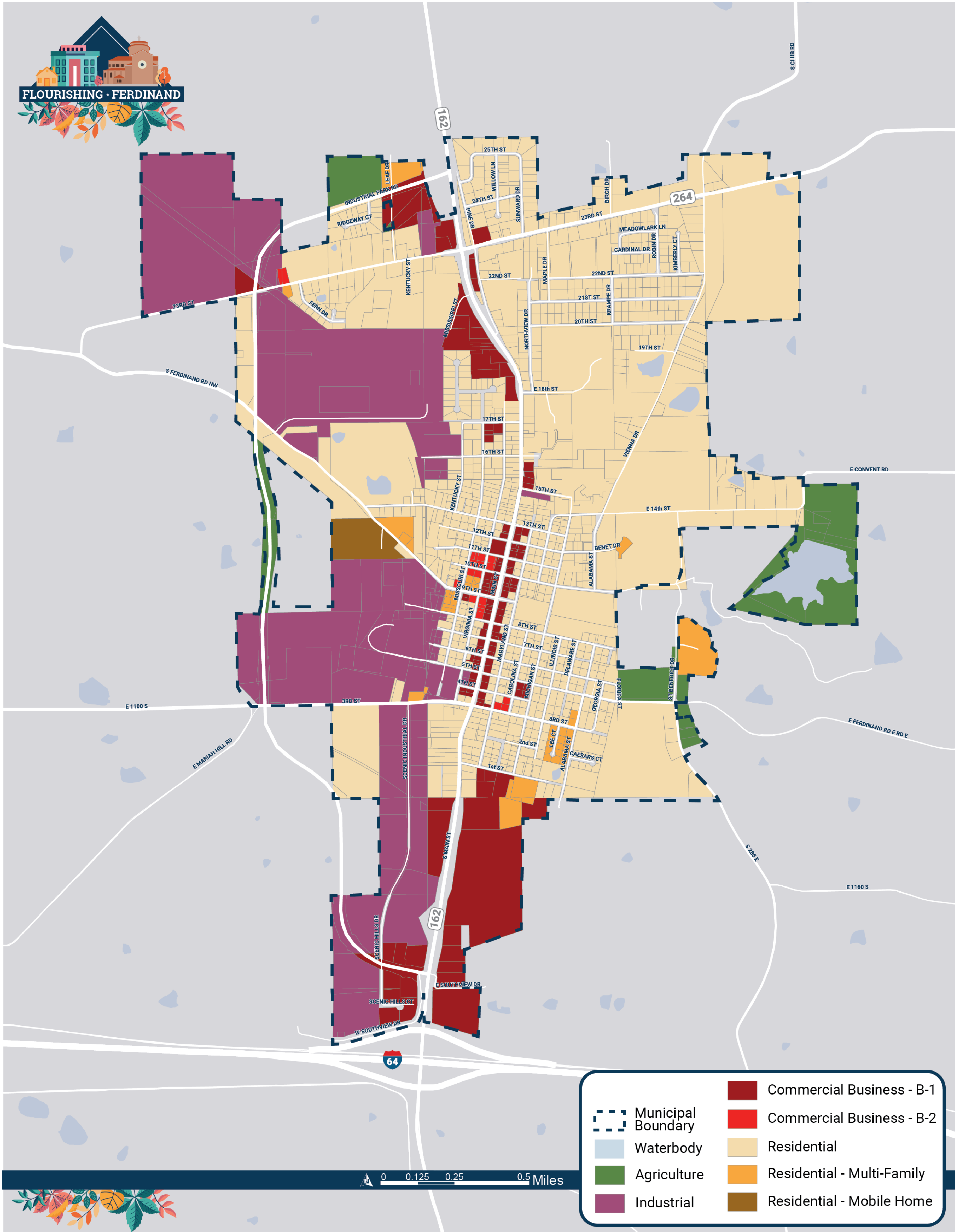
EXISTING LAND USE MAP



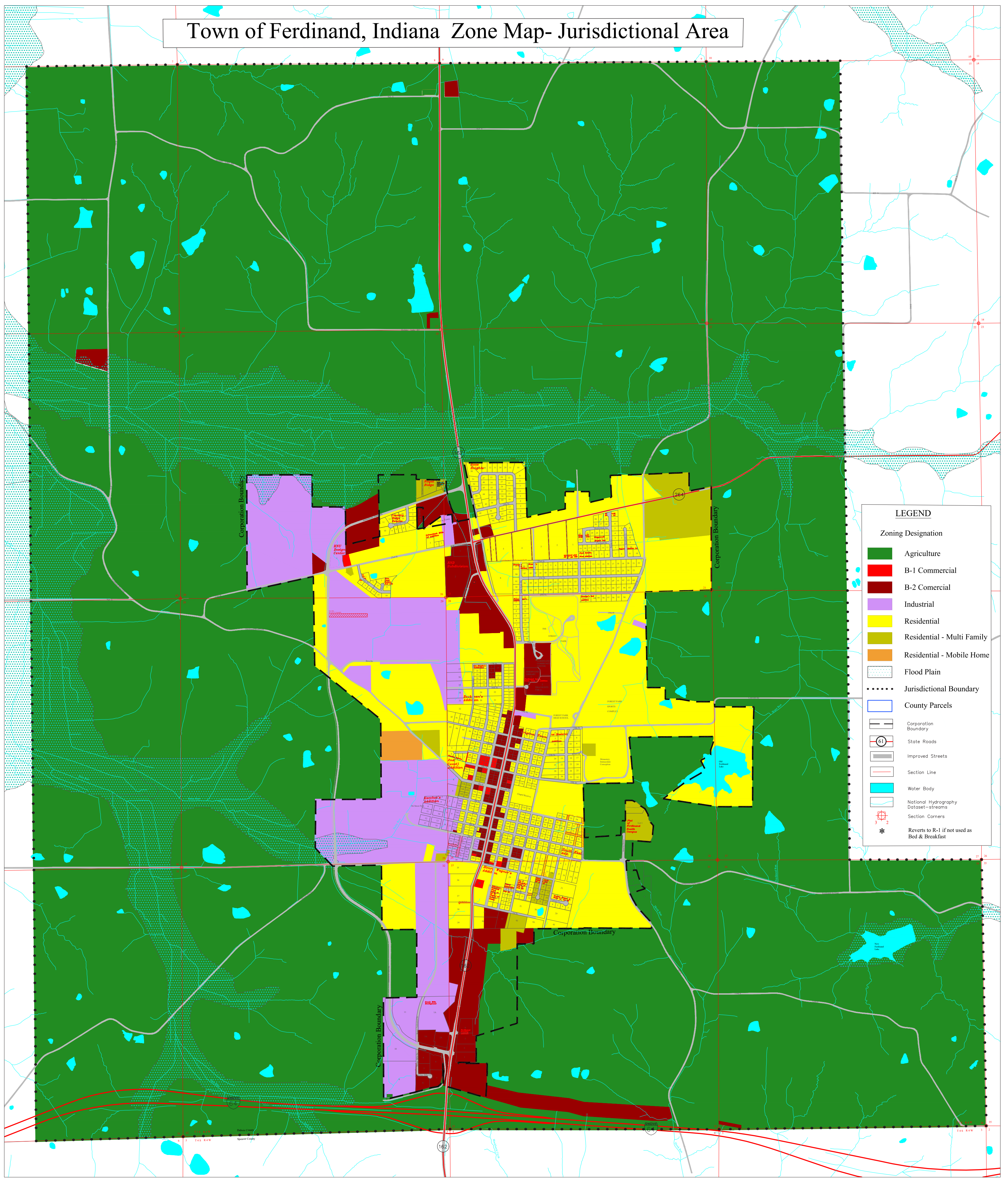
	Vacant		Downtown Business
	Industrial		Commercial Business
	Utility		Residential - Single Family
	Institutional		Residential - Multi-Family
	Agriculture		Residential - Mobile Home
	Recreational		Municipal Boundary
			Waterbody



EXISTING ZONING MAP (2022)



Town of Ferdinand, Indiana Zone Map- Jurisdictional Area

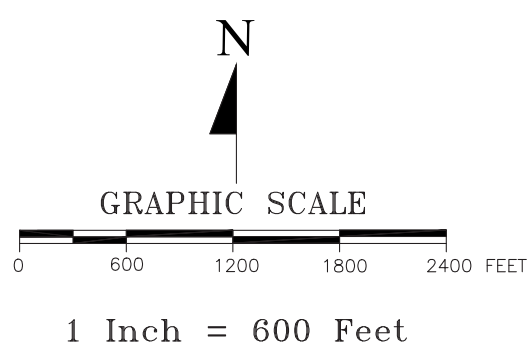


LEGEND	
Zoning Designation	
	Agriculture
	B-1 Commercial
	B-2 Commercial
	Industrial
	Residential
	Residential - Multi Family
	Residential - Mobile Home
	Flood Plain
	Jurisdictional Boundary
	County Parcels
	Corporation Boundary
	State Roads
	Improved Streets
	Section Line
	Water Body
	National Hydrography Dataset-streams
	Section Corners
	* Reverts to R-1 if not used as Bed & Breakfast

The information located upon the Ferdinand, Indiana Zoning Map is provided by Indiana 15 Regional Planning Commission. The data provided herein was compiled using various sources. The sources include:

- The June 15, 2015 Ferdinand Base Map Produced by Indiana 15 Regional Planning Commission
- Ferdinand Replacement Zoning Ordinance 97-3 and associated zoning map dated December 1997
- May 27, 2009 Zoning Designations Map Titled Town of Ferdinand, Indiana Planning and Zoning.
- Ferdinand Ordinances from Ferdinand Code Book from 97-3 up to and including 2022-04 Rezoning and adopting amendments to the text of the Zoning Ordinance.

While the Indiana 15 Regional Planning Commission worked diligently to piece the legal documents together, this data is provided as is without warranty. Any person who relies on said information does so solely at their own risk.



INDIANA 15 REGIONAL PLANNING COMMISSION 225 East Main Street Ferdinand, IN 47132 Phone: 812.262.8431 Fax: 812.262.8171 Website: www.irdpc.org	
Title: Ferdinand, INDIANA - Jurisdictional Area Zoning Map Prepared By: E.E., N.G., S.M. Reviewed By: L.G. Orig: April 12, 2016 Revisions: June 13, 2017; September 12, 2017; December 31, 2017 Revisions: February 22, 2019, June 6, 2022 N: Counties/Other Maps/Zone Maps/Ferdinand Zoning 2022 © Copyright 2022 Indiana 15 Regional Planning Commission	

